

La mousse au chocolat

A stack of several chocolate bars, likely Lindt Excellence, is shown. The bars are dark brown and have a textured surface. They are stacked in a way that shows multiple layers. Overlaid on the bars are three colored boxes containing text: a blue box with 'Etape', a red box with 'par', and a green box with 'étape'.

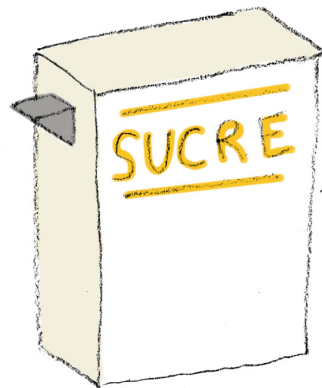
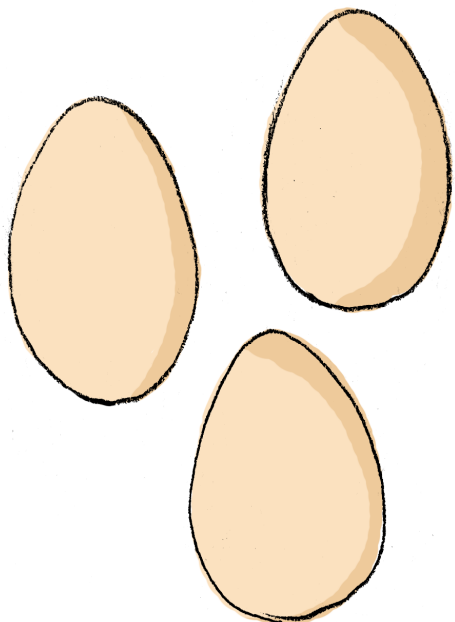
Etape

par

étape

La mousse au chocolat

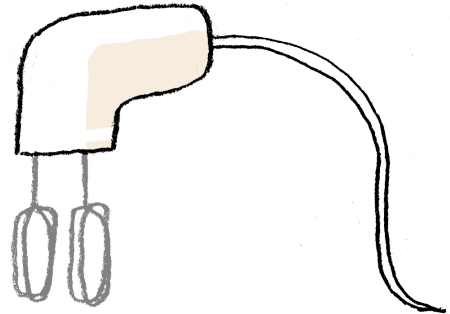
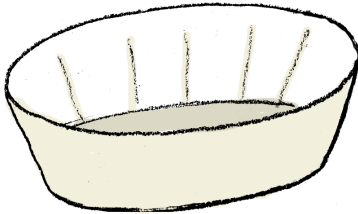
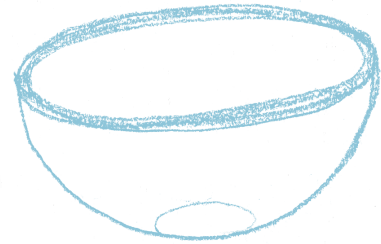
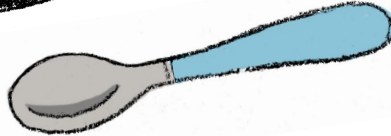
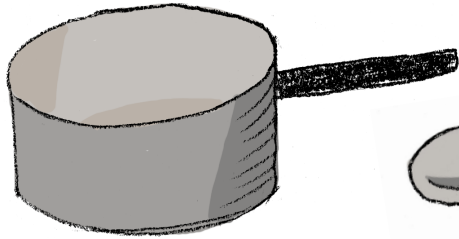
Pour commencer, tu as besoin des ingrédients suivants : 1

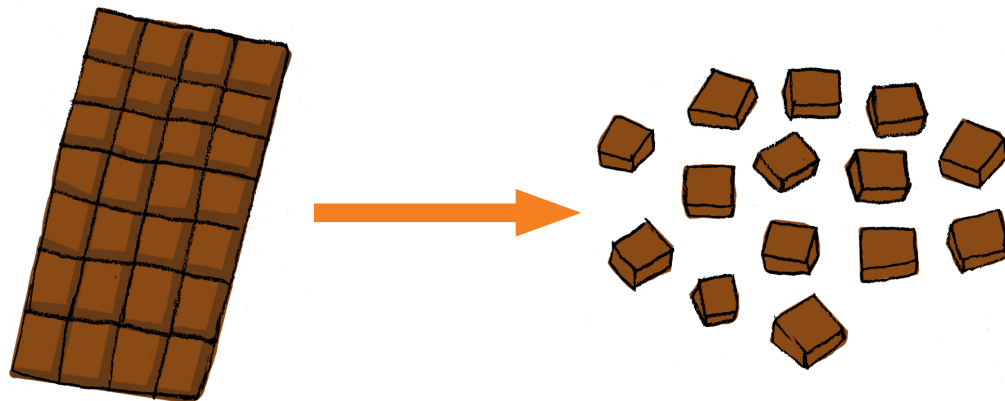


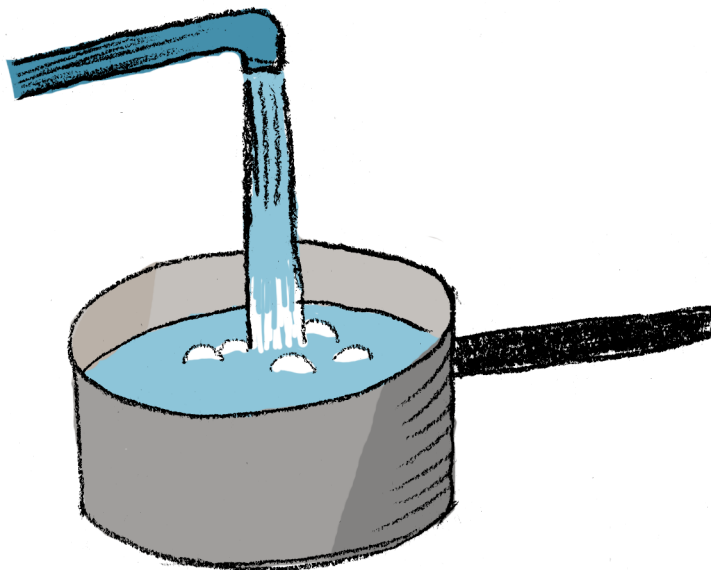
La mousse au chocolat

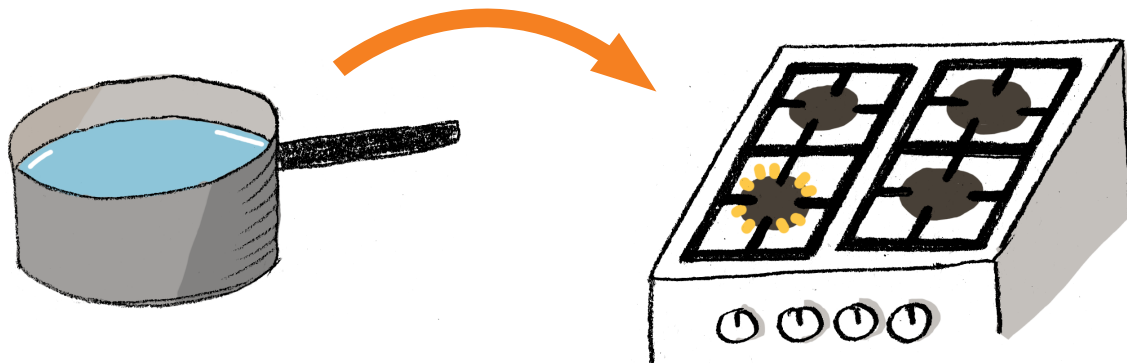
Tu as aussi besoin des ustensiles suivants :

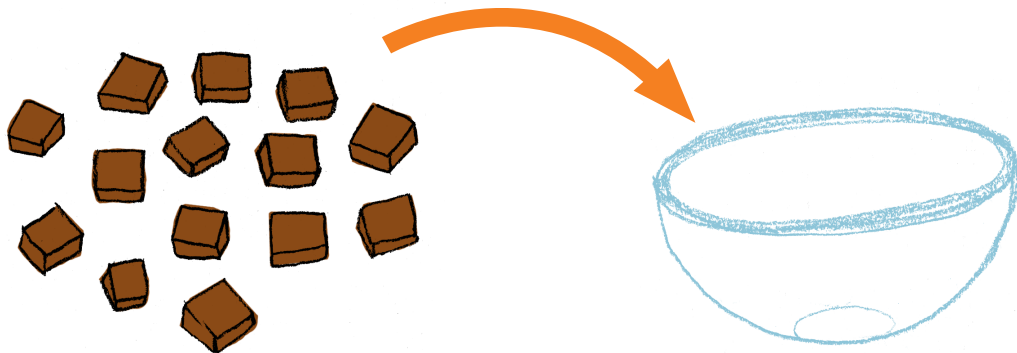
2

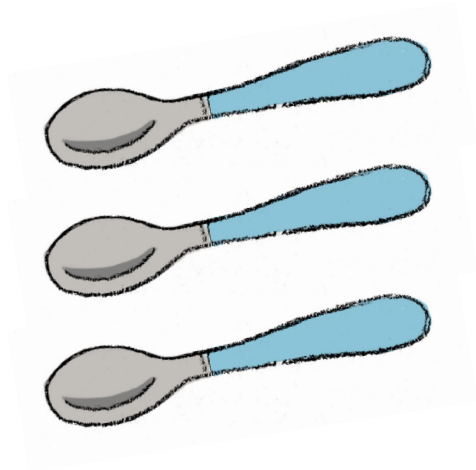
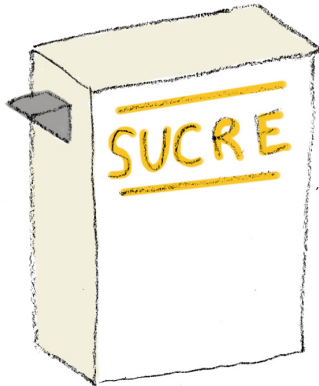


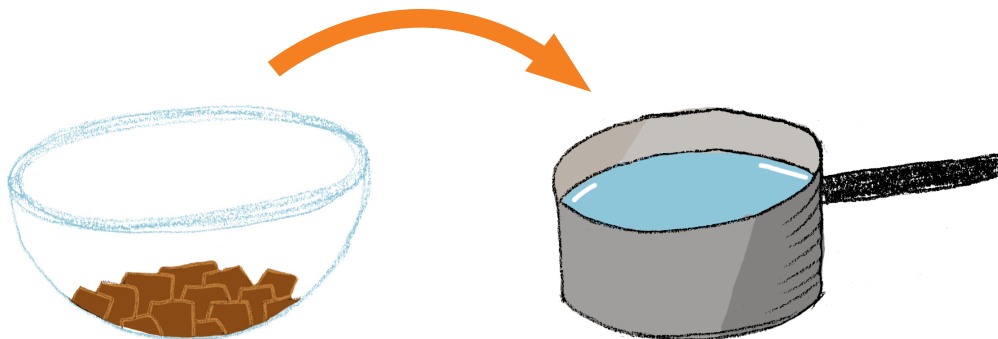


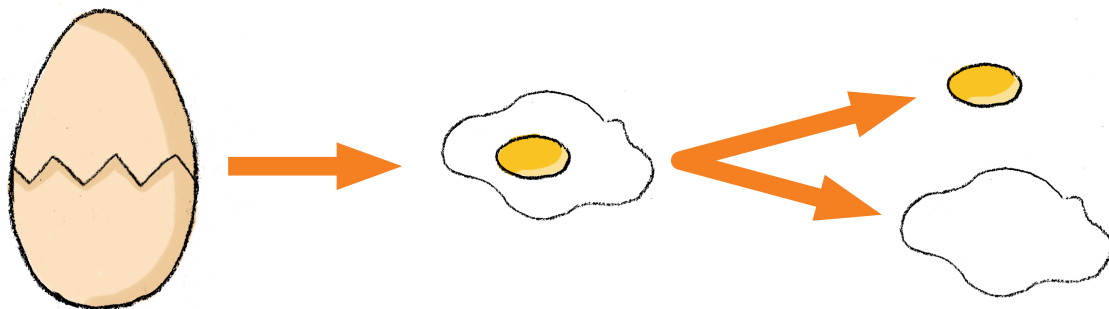


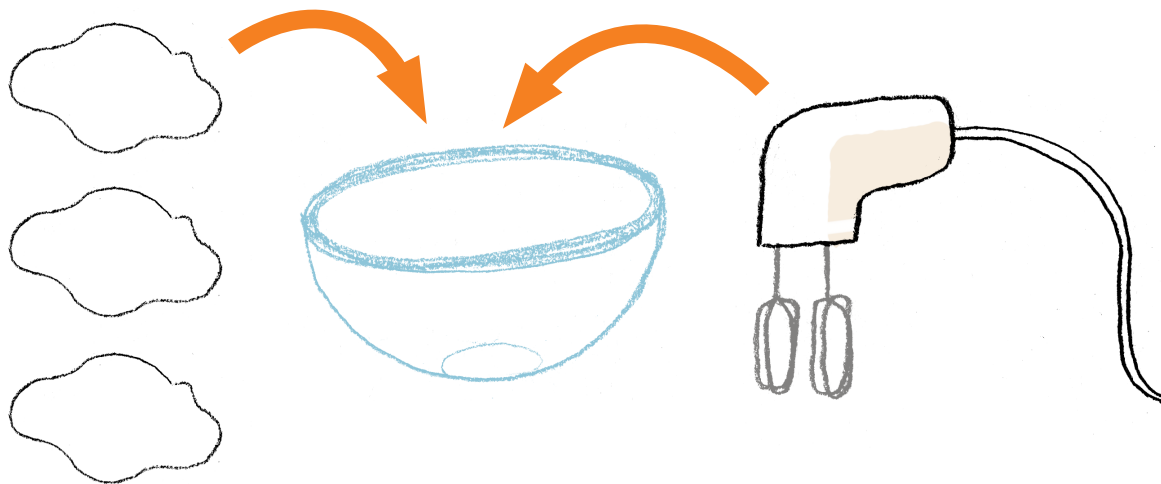


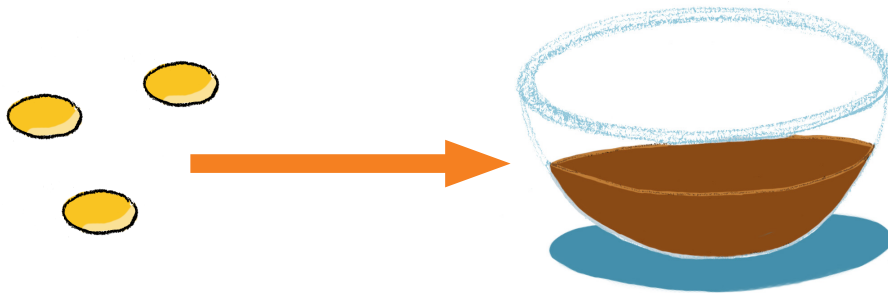


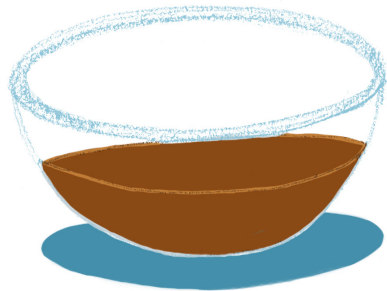


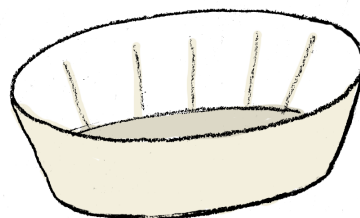
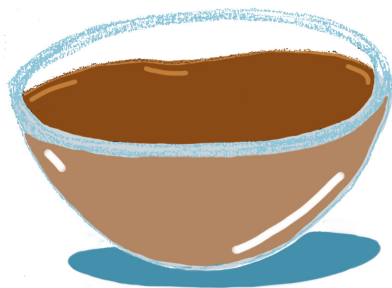


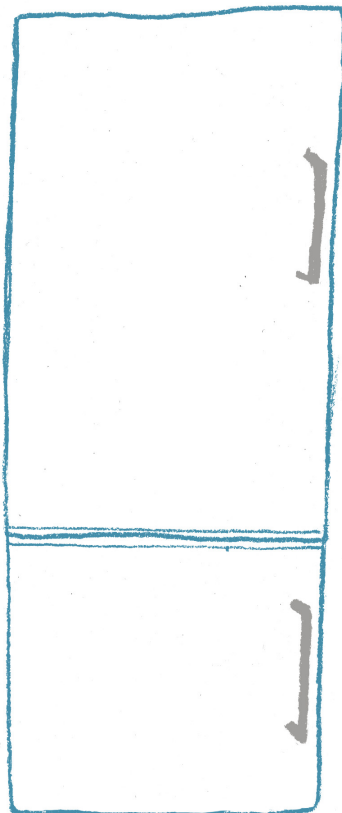












C'est prêt !